



National Report of Iceland

This report gives the summary of the activities that have taken place within the Icelandic Coast Guard - Hydrographic Department (ICG-HD) since the last report given at the ARHC meeting in August 2017.

1. Icelandic Coast Guard – Hydrographic Department

A new organizational chart (<http://www.lhg.is/um-okkur/starfsfolk/skipurit>) for the Icelandic Coast Guard was adopted in December 2017. The Hydrographic Department (ICG-HD) is now a part of a new Maritime division (Siglingasvið). The organizational setup of the ICG-HD is effectively unchanged except for this change. The HD is no longer directly under the Director General but is now under the head of the Maritime division. The number of staff of the HD is the same as before, 8 persons.

The project to survey the EEZ of Iceland, which the Marine & Freshwater Research Institute (MFRI) leads, will continue this year. ICG-HD will take part in the project as planned.

2. Hydrographic Surveys

Scheduled hydrographic surveys were carried out for total of 73 days in 2017. The survey work included a start of the project of surveying in Breiðafjörður, a wide bay on the west coast of Iceland. The project will take several years to complete and includes both resurveying large parts of bay and surveying of numerous previously unsurveyed areas.

The tidal range in Breiðafjörður is in the range of 4.5 to 5.0 m at spring tide, the maximum for Iceland. Tidal currents are strong. Especially in the many narrow channels and sounds. Navigating in the bay is at times a challenge. The inner half of the bay is filled with islands, rocks and shoals. Many underwater rocks and shoals are uncharted.

The southern part of Breiðafjörður was surveyed in the years from 1999 to 2002 using single beam echo sounder. The project which started last summer will focus on covering the northern and eastern parts of the fjord.



Fig. 1 Iceland and the location of Breiðafjörður.

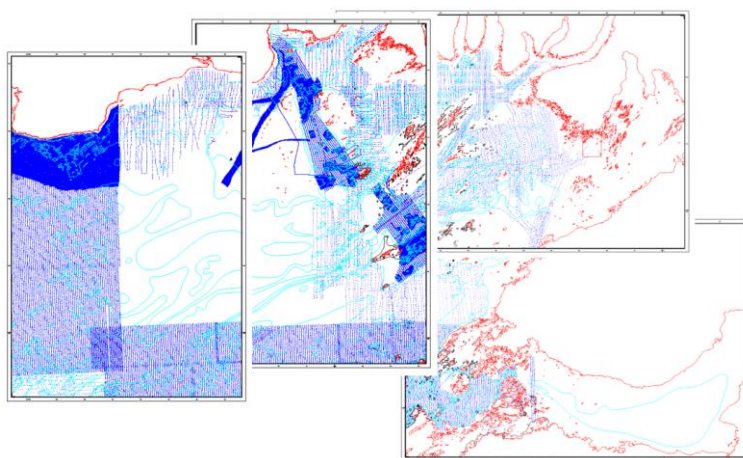
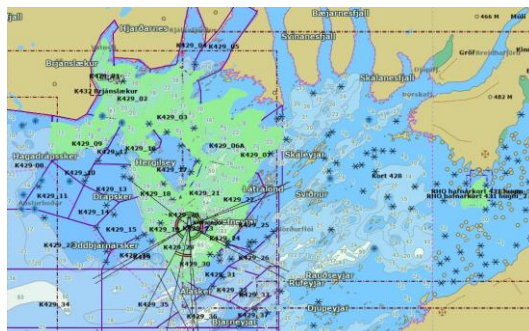


Fig. 2 Surveyed area in Breiðafjörður in 2017 (green) and the four new 1:50 000 charts planned.

Various navigation equipment on board the 27 years old BALDUR has been renewed and the plan for 2019 is to renew the multibeam echo sounder and install a sub-bottom profiler. A tender has been put forward.

While executing a survey on 18th of June 2017 some 4 nautical miles north of the island Flatey BALDUR hit an underwater rock. No one was hurt as this was no more than a touch but it resulted in a damage to one of the two propellers and the propellers shaft. Repairs took a while and BALDUR returned to survey work on 20th of July.

In addition to the above mentioned activities some contract work was carried out for the Port Authorities in Reykjavík.

3. New charts & updates

Printed charts

One New Edition has been published since last ARHC meeting, A3 size harbour plan of Þorlákshöfn. One chart was reprinted. Six harbour plans were updated following NMs.

National No.	Title	Scale	Pub. month
313	Þorlákshöfn	1:10 000	11/2017



ENC production

Ten new editions, there of one new cell, and 8 updates were made on the 72 ENC Cell's produced in Iceland 2017. In 2018 a total of 28 new editions and updates have been made.

Plans for 2018

The CARIS GIS to CARIS Paper Chart Composer (PCC) transition, which started in 2016, is expected to finish later this year. Sixty eight charts out of the 80 Icelandic charts have been brought into the PCC environment. The transition from CARIS GIS to CARIS Paper Chart Composer did progress a somewhat slower than planned. There were many issues to solve and resources in terms of manpower are limited.

Work on incorporating CARIS BASE Editor (BE) in to the Chart Production process is progressing slower than expected. The original plan was to work on PCC and BE simultaneously but the plan was abandoned and BE put on hold. The main reason being that the GIS to PCC transition took up more time than anticipated for those involved. The plan is to pick up pace regarding BE in the autumn of 2018.

4. New publications & updates

The annual nautical publications, *Tide Tables 2018* and *Tide Almanac 2018*, were published in the autumn of 2017. Five issues of *Notices to Mariners* were published in 2017, 45 NMs in total. The pdf-publications, *List of Lights* and *Catalogue of charts* were updated in June 2017 and are available at www.lhg.is.

Four issues on NMs have been published in 2018, total of 21 NM. The *List of Lights* and *Catalogue of charts* will be updated this autumn. *Tide Tables 2019* and *Tide Almanac 2019*, will published in the autumn.

A number of harbour charts need updating. New editions of those charts will be published in the coming months.

5. MSI

Nothing to report

6. C-55

Nothing to report

7. Oceanographic activities

The project of surveying the EEZ of Iceland which the MFRI leads and ICG-HD will take part in as planned has led to a decision to install a Sub-bottom profiler on board ICG-HD survey vessel BALDUR.

8. Capacity Building

A CARIS HIPS training course was held in December 2017 in cooperation with the MFRI. Attendees came from both the ICG-HD and the MFRI.



9. Other activities.

IHO RHCs, WGs and other work

Members of ICG-HD staff attended the following:

The second IC-ENC Technical Conference in May 2017.

Meeting of the Nordic Chart Production Expert Group (NCPEG) early October 2017.

Meeting of the Nordic Hydrographic Technical WG late October 2017.

Meetings of RHCs. NSHC in March 2018 and NHC in April 2018

Meeting of the IC-ENC Steering Committee July 2018

MSDI

ICG-HD was involved in SDI work in Iceland in relation to adoption of the INSPIRE directive, which the National Land Survey of Iceland lead. The issue of MSDI has been raised with in the HD but resources do not allow that much effort is put into MSDI matters. Iceland however joined the ARMSDIWG under the IHO ARHC in November 2016 in spite of thin resources. It resulted in the fact that Iceland has been inactive in the work of ARMSDIWG up till now.

ICG-HD has through the involvement in SDI work in Iceland made depth contours from nautical charts available via Data portal which the National Land Survey of Iceland operates. This is a part of a SDI project that NLSI leads.

Data portal "Lýsigagnagátt" <https://gatt.lmi.is/geonetwork/srv/eng/catalog.search#/home>

Baseline for Territorial Waters

The Icelandic Parliament "Alþingi" passed law on Baseline, Territorial Limits etc. in June 2017. It was an update to previous law from 1979 on the same. The new laws include a Contiguous zone. The ICG-HD will in the near future publish New Editions of the coastal and transit paper charts affected. The band 3 ENC's have been updated and work on updating the band 4 ENC's is ongoing.

This report highlights the main activities of the Icelandic Coast Guard, Hydrographic Department since the last ARHC meeting.